

Stainless Steel Flexible Chimney Liner



WOOD



GAS



OIL

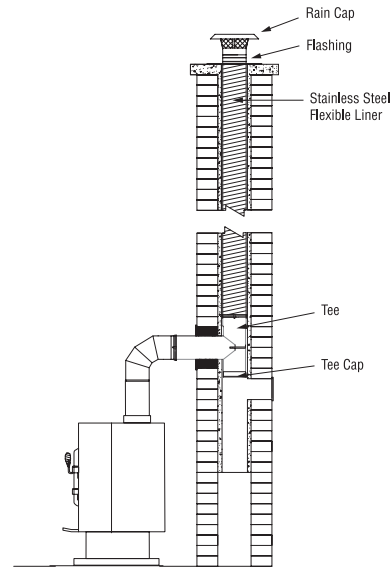
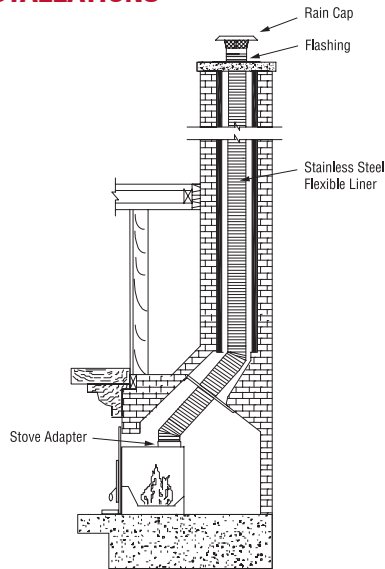
Stainless Steel Flexible Chimney Liner

Flex is the most premier and high performance Stainless Steel Chimney liner available.

Specifications

- Flex Liner Material – .006 316 Stainless Steel
- Regular all-fuel SS Liner available in 4" – 8" diameters
- Pellet Kits available in 3" and 4" diameters
- Standard Flex Kit Lengths – 25' and 35'
- Clearances – 0" between liner and masonry chimney interior with the insulation wrap
- Can be installed on gas, oil, or wood appliances
- Insulation – Wraps available in 10' lengths
- Listed To ULC–S635, in Canada and UL 1777 in USA
- Limited Lifetime Warranty

FLEX LINER INSTALLATIONS



KITS

Complete Standard Liner Kit



- All fuel 316 stainless steel chimney liner
- UL 1777 and ULC–S635 Listed
- Kit includes Chimney Liner, Tee with End Cap, Flashing, and Rain Cap
- Integrated hose clamps allow easy assembly, no adapters or fasteners



Product No.	Part No.	Size	Pack
194100	4MF25KT	4" X 25'	1
194101	4MF35KT	4" X 35'	1
195102	5MF25KT	5" X 25'	1
195103	5MF35KT	5" X 35'	1
196104	6MF25KT	6" X 25'	1
196105	6MF35KT	6" X 35'	1
197106	7MF25KT	7" X 25'	1
197107	7MF35KT	7" X 35'	1
198108	8MF25KT	8" X 25'	1
198109	8MF35KT	8" X 35'	1

Stainless Steel Flexible Chimney Liner

Complete Smoothwall Standard Liner Kit



- All fuel 316 stainless steel chimney liner
- UL 1777 and ULC–S635 Listed
- Kit includes Chimney Liner, Tee with End Cap, Flashing, and Rain Cap
- Integrated hose clamps allow easy assembly, no adapters or fasteners
- Higher BTU capacity
- Smooth inner wall creates superior draft performance

Product No.	Part No.	Size	Pack
194152	4MF25KTS	4" X 25'	1
194153	4MF35KTS	4" X 35'	1
195154	5MF25KTS	5" X 25'	1
195155	5MF35KTS	5" X 35'	1
196156	6MF25KTS	6" X 25'	1
196157	6MF35KTS	6" X 35'	1
197158	7MF25KTS	5" X 25'	1
197159	7MF35KTS	5" X 35'	1
198160	8MF25KTS	8" X 25'	1
198161	8MF35KTS	8" X 35'	1

Insert Basic Liner Kit



- All fuel 316 stainless steel chimney liner
- UL 1777 and ULC–S635 Listed
- Kit includes Chimney Liner, Flashing, Stove Adapter, and Rain Cap
- Integrated hose clamps allow easy assembly, no adapters or fasteners

Product No.	Part No.	Size	Pack
195110	5MF25IK	5" X 25'	1
195111	5MF35IK	5" X 35'	1
1955112	55MF25IK	5.5" X 25'	1
1955113	55MF35IK	5.5" X 35'	1
196114	6MF25IK	6" X 25'	1
196115	6MF35IK	6" X 35'	1

Stainless Steel Flexible Chimney Liner

Insert Smoothwall Basic Liner Kit



- All fuel 316 stainless steel chimney liner
- UL 1777 and ULC-S635 Listed
- Kit includes Chimney Liner, Flashing, Stove Adapter, and Rain Cap
- Integrated hose clamps allow easy assembly, no adapters or fasteners
- Higher BTU capacity
- Smooth inner wall creates superior draft performance

Product No.	Part No.	Size	Pack
195162	5MF25IKS	5" X 25'	1
195163	5MF35IKS	5" X 35'	1
1955164	55MF25IKS	5.5" X 25'	1
1955165	55MK35IKS	5.5" X 35'	1
196166	6MF25IKS	6" X 25'	1
196167	6MF35IKS	6" X 35'	1

Pellet Kit



- All fuel 316 stainless steel chimney liner
- UL 1777 Listed
- Kit includes Chimney Liner, Tee with Cap, Flashing, and Rain Cap
- Integrated hose clamps allow easy assembly, no adapters or fasteners
- Kit uses short body pellet tee for easy installation to pellet appliance

Product No.	Part No.	Size	Pack
193116	3MF25PK	3" X 25'	1
193117	3MF35PK	3" X 35'	1
194118	4MF25PK	4" X 25'	1
194119	4MF35PK	4" X 35'	1

Insulation Wrap Kit



- 10 ft. Kit includes foil-backed insulation, wire mesh, wire and aluminum tape
- Reduces heat loss to maintain high flue temperatures
- A requirement for UL 1777 – allows for reduced clearance to combustibles (see installation instructions for details)
- For 3" and 4" liners use 5" insulation wrap

Size	Product No.	Part No.	Pack
5"	195120	5RF10I	1
6"	196120	6RF10I	1
7"	197120	7RF10I	1
8"	198120	8RF10I	1



Stainless Steel Flexible Chimney Liner

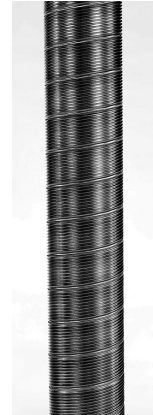
PARTS & ACCESSORIES

Stainless Flex Length Liner



- Flex liner is available in .006" thick steel which is thicker and stronger than .005" steel.

Product No.	Part No.	Size	Pack
194168	4MF25SFL	4" X 25'	1
194169	4MF35SFL	4" X 35'	1
195170	5MF25SFL	5" X 25'	1
195171	5MF35SFL	5" X 35'	1
1955172	55MF25SFL	5.5" X 25'	1
1955173	55MF35SFL	5.5" X 35'	1
196174	6MF25SFL	6" X 25'	1
196175	6MF35SFL	6" X 35'	1
197176	7MF25SFL	7" X 25'	1
197177	7MF35SFL	7" X 35'	1
198178	8MF25SFL	8" X 25'	1
198179	8MF35SFL	8" X 35'	1



Stainless Flex Length Smoothwall Liner



- Smoothwall Liner that has superior flexibility with a high BTU capacity
- Its smooth interior allows for more airflow, reducing drag by 20% over traditional corrugated liners
- Smoothwall is made from 2-ply 316 stainless steel which makes it ideal for any application

Product No.	Part No.	Size	Pack
194180	4MF25SFLS	4" X 25'	1
194181	4MF35SFLS	4" X 35'	1
195182	5MF25SFLS	5" X 25'	1
195183	5MF35SFLS	5" X 35'	1
1955184	55MF25SFLS	5.5" X 25'	1
1955185	55MF35SFLS	5.5" X 35'	1
196186	6MF25SFLS	6" X 25'	1
196187	6MF35SFLS	6" X 35'	1
197188	7MF25SFLS	7" X 25'	1
197189	7MF35SFLS	7" X 35'	1
198190	8MF25SFLS	8" X 25'	1
198191	8MF35SFLS	8" X 35'	1

Stainless Steel Flexible Chimney Liner

Fixed Elbow

- Stainless steel adjustable and fixed elbows are available in 4"– 8" diameters
- Elbows are used for rigid and outside diameter "OD" flex pipe or for inside diameter "ID" flex pipe in a multitude of degrees



30 DEGREE ELBOW

Product No.	Part No.	Size	Pack
194131	4MFFE30	4"	1
195132	5MFFE30	5"	1
196133	6MFFE30	6"	1
197134	7MFFE30	7"	1
198135	8MFFE30	8"	1



45 DEGREE ELBOW

Product No.	Part No.	Size	Pack
194136	4MFFE45	4"	1
195137	5MFFE45	5"	1
196138	6MFFE45	6"	1
197139	7MFFE45	7"	1
198140	8MFFE45	8"	1

90 DEGREE ELBOW

Product No.	Part No.	Size	Pack
194141	4MFFE90	4"	1
195142	5MFFE90	5"	1
196143	6MFFE90	6"	1
197144	7MFFE90	7"	1
198145	8MFFE90	8"	1



Flex Tee

- Tee Cap not included



Product No.	Part No.	Size	Pack
194212	4MFFT	4"	1
195213	5MFFT	5"	1
196214	6MFFT	6"	1
197226	7MFFT	7"	1
198216	8MFFT	8"	1

Pellet Tee

- Tee Cap not included



Product No.	Part No.	Size	Pack
193210	3MFPT	3"	1
194211	4MFPT	4"	1

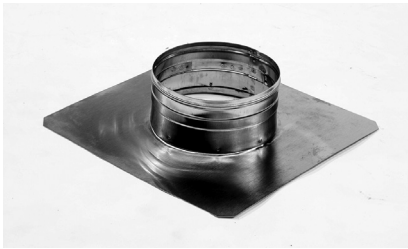
Stainless Steel Flexible Chimney Liner

Tee Cap



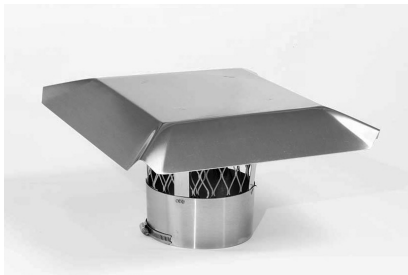
Product No.	Part No.	Size	Pack
194217	4MFTC	4"	1
195218	5MFTC	5"	1
196219	6MFTC	6"	1
197220	7MFTC	7"	1
198221	8MFTC	8"	1

Flashing



Product No.	Part No.	Size	Small	Large	Pack
194192	4MFFS	4"	13" X 13"		1
194193	4MFFL	4"		18" X 18"	1
195194	5MFFS	5"	13" X 13"		1
195195	5MFFL	5"		18" X 18"	1
1955196	55MFFS	5.5"	13" X 13"		1
1955197	55MFFL	5.5"		18" X 18"	1
196198	6MFFS	6"	13" X 13"		1
196199	6MFFL	6"		18" X 18"	1
197225	7MFFS	7"	13" X 13"		1
197201	7MFFL	7"		18" X 18"	1
198202	8MFFS	8"	13" X 13"		1
198203	8MFFL	8"		18" X 18"	1

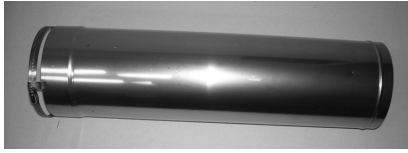
Rain Cap



Product No.	Part No.	Size	Pack
194204	4MFRC	4"	1
195205	5MFRC	5"	1
1955206	55MFRC	5.5"	1
196207	6MFRC	6"	1
197208	7MFRC	7"	1
198209	8MFRC	8"	1

Stainless Steel Flexible Chimney Liner

Top Kit Extension



- The Top Kit Extension is a rigid section that can be used to extend the height of your flex liner system
- The extension attaches the EZ top plate and the rain cap
- Manufactured in 24ga 304 stainless steel with an EZ clamp for easy connection

Product No.	Part No.	Size	Length	Pack
195126	5MFTKE	5"	24"	1
1955127	55MFTKE	5.5"	24"	1
196128	6MFTKE	6"	24"	1
197129	7MFTKE	7"	24"	1
198130	8MFTKE	8"	24"	1

Flex Connector



- Used to attach two separate flex liner lengths together

Product No.	Part No.	Size	Pack
194120	4MFFC	4"	1
195121	5MFFC	5"	1
1955122	55MFFC	5.5"	1
196123	6MFFC	6"	1
197124	7MFFC	7"	1
198125	8MFFC	8"	1

Stove Adapter



- Attaches flex liner to the outlet collar of a stove appliance

Product No.	Part No.	Size	Pack
195222	5MFSA	5"	1
1955223	55MFSA	5.5"	1
196224	6MFSA	6"	1

Pulling Cone



- As an installation aide, the cone is used to guide and protect the flexible liner when it is lowered into the masonry chimney

Product No.	Part No.	Size	Pack
194146	4MFPC	4"	1
195147	5MFPC	5"	1
1955148	55MFPC	5.5"	1
196149	6MFPC	6"	1
197150	7MFPC	7"	1
198151	8MFPC	8"	1

All Chimney Systems Are Not Created Equal.



**Flexible Aluminum
Chimney Liners**



**Stainless Steel
Rigid Liners**



Ultimate Pellet Pipe



**Double Wall
DCC Stove Pipe**



**Direct Vent Pipe
for Gas, Pellet, or Multi-Fuel**



Selkirk Canada Corporation
375 Green Road
Stoney Creek, On L8E4A5
Toll Free: 1.888.SELKIRK (735.5475)
cscanada@selkirkcorp.com



selkirkcorp.com

Selkirk Corporation
5030 Corporate Exchange Blvd. SE
Grand Rapids, MI 49512
Toll Free: 1.800.433.6341
info@selkirkcorp.com
www.selkirkcorp.com