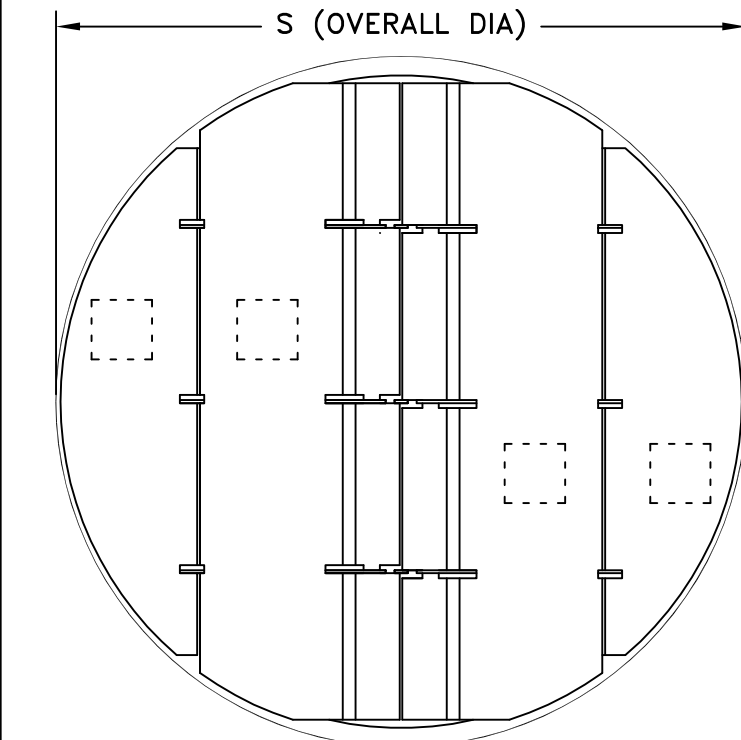
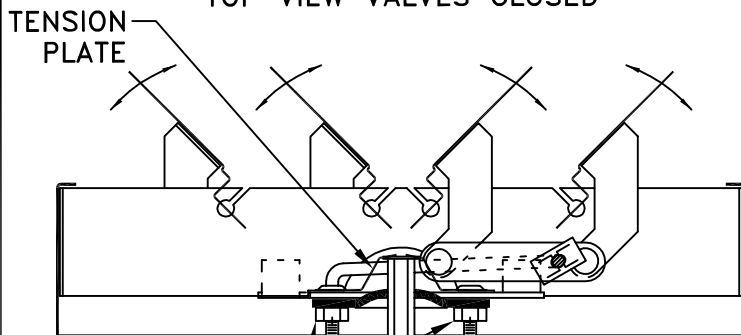


- STEEL CONSTRUCTION .035 THICK
- SCREW OR RIVET TO DUCT
- OPPOSED BLADE OPERATION
- AVAILABLE IN 6 - 18 INCH DIAMETERS
- FINISH: WHITE (W) ENAMEL



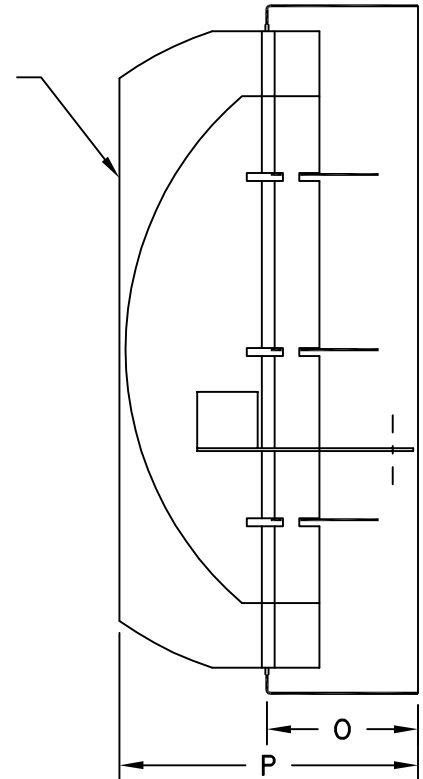
TOP VIEW VALVES CLOSED



LOCK NUTS:  
 LOOSEN BEFORE  
 ADJUSTING DAMPER.  
 TIGHTEN AFTER ADJUSTING  
 DAMPER TO PROVIDE POSITIVE LOCK.

CROSS SECTION WITH VALVES PARTLY OPEN  
 SHOWING OPPOSED BLADE OPERATION

OPPOSED  
 BLADE  
 DAMPER  
 VALVES  
 FULLY  
 OPEN



IF OPERATOR IS TO BE REMOVED AFTER  
 SETTING DAMPER, DO NOT DRIVE INTO  
 TENSION PLATE AS THIS LOCKS ROD IN  
 PLACE FOR PERMANENT INSTALLATION

SIZE	S	O	P
6	5-15/16	1-3/4	3
8	7-15/16	1-3/4	3-1/2
10	9-15/16	1-3/4	4-9/16
12	11-15/16	1-3/4	4-9/16
14	13-15/16	1-3/4	4-9/16
15	14-15/16	1-3/4	4-9/16
16	15-15/16	1-3/4	4-9/16
18	17-15/16	1-3/4	4-9/16

JOB NAME: \_\_\_\_\_  
 LOCATION: \_\_\_\_\_  
 ARCHITECT: \_\_\_\_\_  
 ENGINEER: \_\_\_\_\_  
 CONTRACTOR: \_\_\_\_\_

SUBMITTED BY: \_\_\_\_\_

DATE: 06/20/2013 SD-9226  
**19**  
 Steel Opposed Blade  
 Volume Damper For  
 Round Neck Diffuser