

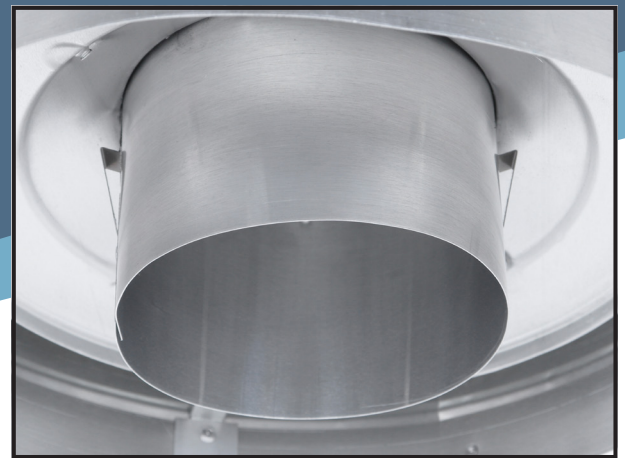
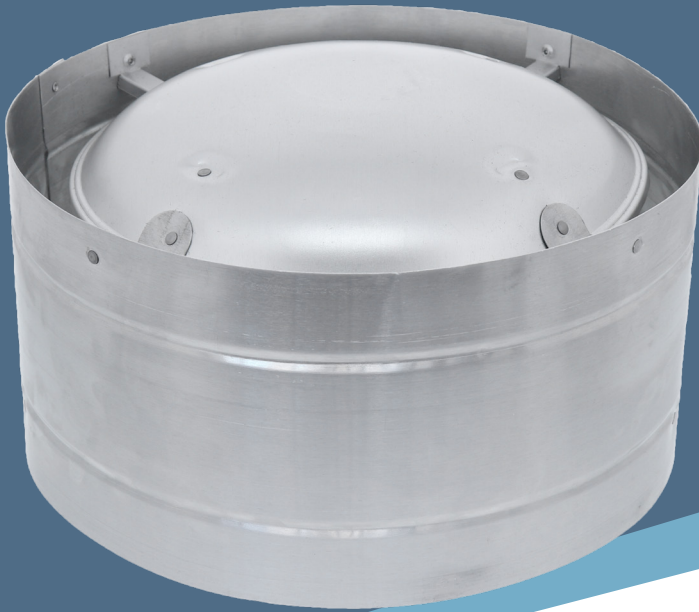
# High Wind Cap with 2 Locking Tabs

**HART** **COOLEY**<sup>®</sup>  
install confidence.

hartandcooley.com  
800-433-6341



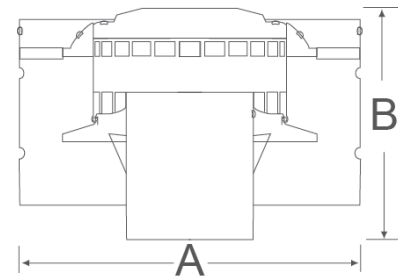
High Wind Cap Link



## High Wind Cap - RWW

- 3" through 6"
- Prevents rain & debris from entering the vent
- Two Locking Tabs ensure a secure connection even in high wind environments
- Used in high wind conditions without sacrificing draft and safety or risking pilot light blow out

\*Turn over for installation tips



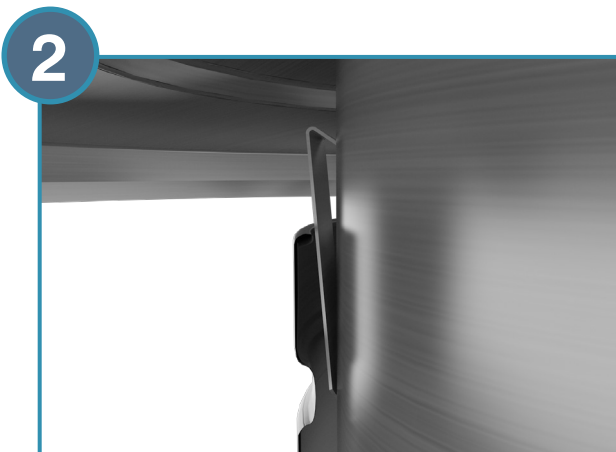
| Model Number | Size | A   | B      |
|--------------|------|-----|--------|
| 3RWW         | 3"   | 8"  | 5 1/2" |
| 4RWW         | 4"   | 10" | 6"     |
| 5RWW         | 5"   | 12" | 7"     |
| 6RWW         | 6"   | 14" | 7 1/2" |

GRILLES | REGISTERS | DIFFUSERS | VENT | CHIMNEY  
ACCESS DOORS | FILTERS | DUCT COMPONENTS | ROOFTOP PRODUCTS

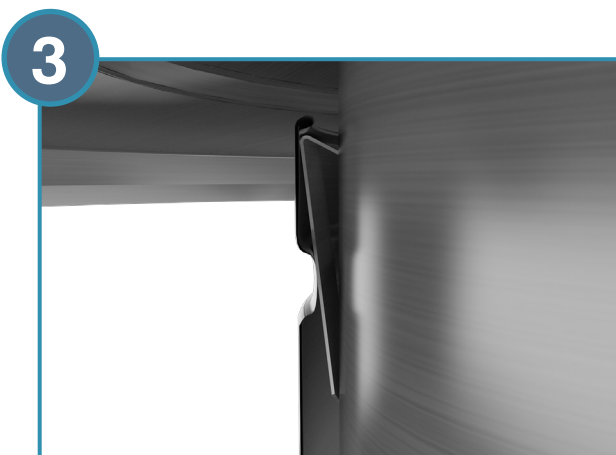
## \*Tips & Tricks:



1. Push cap into the upper end of the pipe. Make sure both locking tabs slide inside the pipe



2. Press firmly until the locking tabs snap into place below the curled inner edge of pipe



3. Pull up on cap to ensure the termination is secure

